

BRUNTON

RESIDENTIAL



SANDRINGHAM ROAD, SOUTH GOSFORTH, NE3

£1,100 Per Month

BRUNTON

RESIDENTIAL





BRUNTON

RESIDENTIAL



BRUNTON

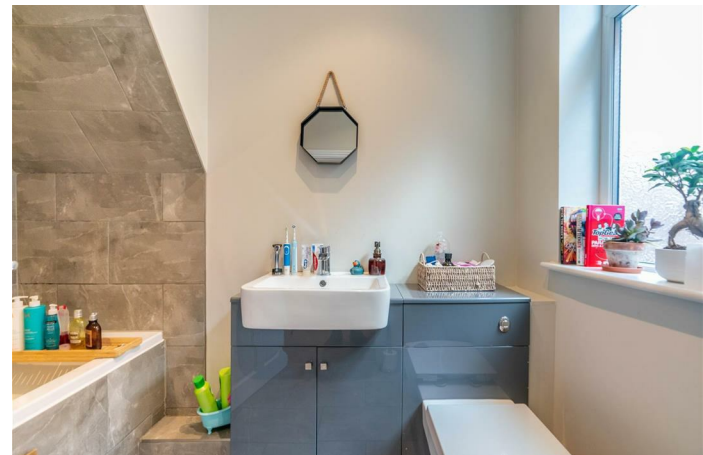
RESIDENTIAL



****360 VIRTUAL TOUR AVAILABLE**** - Available 25/05/2026 £1100pcm - Refurbished to a high standard - Two bedrooms - Ground floor flat - Modern kitchen & bathroom - Private rear yard - Must be seen - - Unfurnished

BRUNTON

RESIDENTIAL



BRUNTON

RESIDENTIAL



BRUNTON

RESIDENTIAL

TENURE :

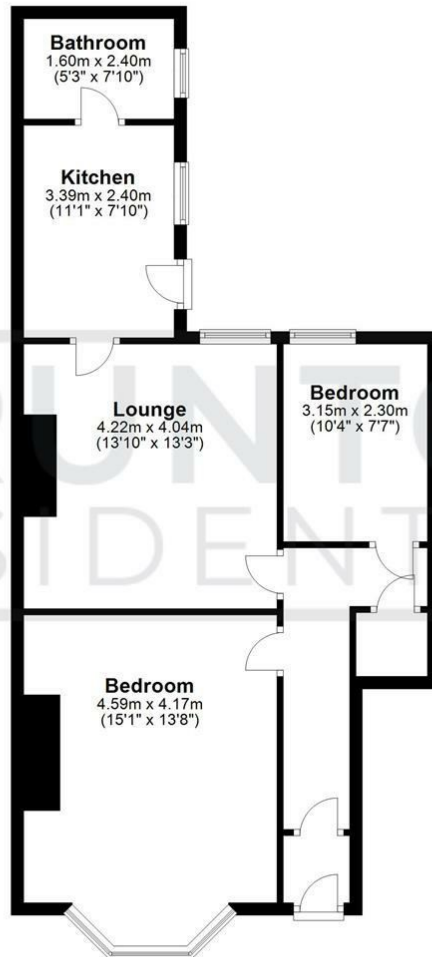
LOCAL AUTHORITY :

COUNCIL TAX BAND : A

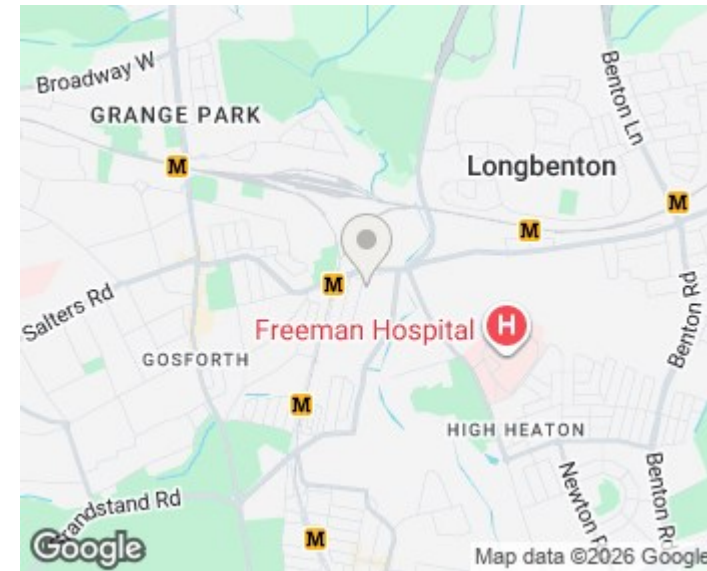
EPC RATING : C

Ground Floor

Approx. 66.4 sq. metres (714.3 sq. feet)



All measurements are approximate and are for illustration only.
Plan produced using PlanUp.



Energy Efficiency Rating		Current	Potential
Very energy efficient - lower running costs			
(92 plus) A			
(81-91) B			
(69-80) C			
(55-68) D			
(39-54) E			
(21-38) F			
(1-20) G			
Not energy efficient - higher running costs			
		69	76
EU Directive 2002/91/EC			
England & Wales			

Environmental Impact (CO ₂) Rating		Current	Potential
Very environmentally friendly - lower CO ₂ emissions			
(92 plus) A			
(81-91) B			
(69-80) C			
(55-68) D			
(39-54) E			
(21-38) F			
(1-20) G			
Not environmentally friendly - higher CO ₂ emissions			
EU Directive 2002/91/EC			
England & Wales			